

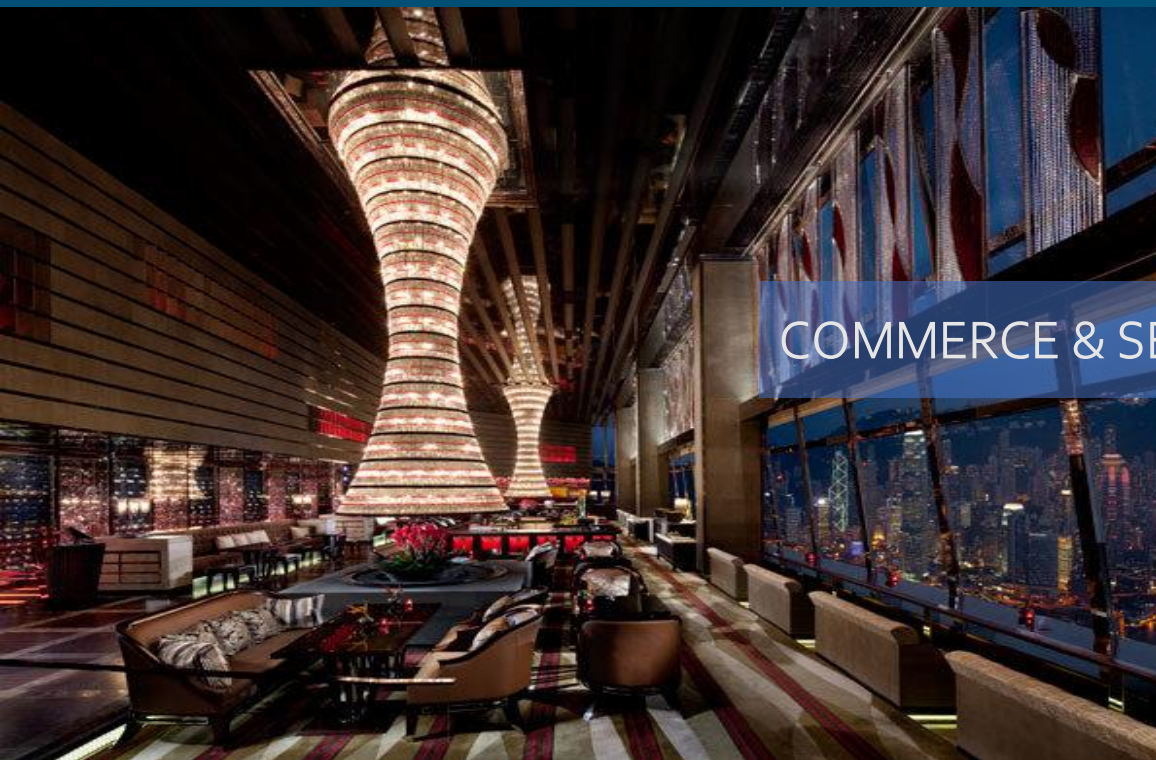
PORTFOLIO





Geosustent is an Engineering and Consulting company specialized in environmental services; since 2009 it offers diversified environmental solutions, combining professionalism and excellence to their customers. Composed of a multidisciplinary team of professionals with refined technical capacity and an integrated vision, the company bases its goals on the pillars of technological innovation, commitment to the environment and focus on the customer, aiming for results. Its services are provided nationwide, helping public and private sectors to deal with technical environmental issues in a responsible, sustainable, efficient and innovative manner.

SECTORS



COMMERCE & SERVICES



PETROCHEMICAL – OIL & GAS

SECTORS

INDUSTRY



MINING



SECTORS



INFRASTRUCTURE



PUBLIC SECTOR

SECTORS



AGRIBUSINESS



NEW TECHNOLOGIES



MORE
THAN:

3.750

DELIVERED PROJECTS

1.500

SERVED CUSTOMERS

100

SORTS OF SERVICES

SERVICES – Studies and Plans

- Solid Waste Management Plan
- Civil Construction Waste Management Plan
- Health Services Waste Management Plan
- Simplified Environmental Study
- Preliminary Environmental Report
- Environmental Impact Study with Report
- Environmental Control Plan
- Neighborhood Impact Study
- Traffic Impact Report
- Basic Environmental Plan and Environmental Programs
- Degraded Area Recovery Plan



SERVICES – Surveys and Monitoring

- Environmental monitoring: water, effluente, soil, noise, atmospheric emissions
- Fauna survey and reports
- Vegetation assessment for supression / cutting
- Greenhouse gas inventory (GHG)
- Inventory of emissions and CO₂ offset ("carbon footprint")
- Geological / geotechnical reports
- Topography and plani-altimetric survey
- Bathymetry
- Photogrammetric survey (orthophoto)
- Cadastral georeferencing
- Environmental aspects and impacts with proposition of mitigating measures



SERVICES – Interlocution with Environmental Agencies

- CETESB – Licensing, regularizations and applications for general authorizations
- DAEE - Regularization of dams, wells, water collections and releases, grants and waivers of the right to use water
- SUPRAM - Regularizations and general authorization requests
- IBAMA - Federal technical registry of potentially polluting activities and/or users of environmental resources, emission of federal fees and activities report
- IPHAN – General registration requests, archaeological heritage impact assessment projects
- SICAR / SIGEF – Regularization of rural properties
- GEFAU – Registration of animal breeding activities
- SIMPOA / SISP / SIF – Product and company certifications



SERVICES – Projects

- As built, monitoring and follow-up for projects of different types
- Technical drawings, internal and external layouts
- Earthmoving general projects
- Road projects - streets and access
- Drainage projects - rainwater, percolating liquid
- Hydrosanitary and biodigestors projects
- Sanitary landfill / inert landfill projects - preliminary / basic / executive
- Waste transshipment projects - preliminary / basic / executive
- Waste selection and composting plant projects - preliminary / basic / executive



SERVICES – Tendencies

- Environmental liability studies (3 assessment phases: preliminary / confirmatory / detailed)
- Due diligence assessments for different projects and companies
- Follow-up of the development of new treatment technologies particularly for emissions, waste and effluents like: photocatalysis / pyrolysis / gasification
- R&D – new environmental business strategies
- Geoprocessing and computerized fluid dynamics
- Trainings, lectures, courses, events
- Relationship with organizations, institutions and class councils: CREA, ABES, ABENGE, ABECE, ABRELPE, ABLP, ABETRE, ABREN, among others
- Prospecting opportunities in the decommissioning of oil & gas platforms for environmental consultancy
- Others...





- General plant diagnosis for waste management.
- Development of waste management plan with reduction targets suggested by the municipal government of Osasco-SP.
- Environmental liabilities study, removal management and logistics.
- Environmental licensing in its different phases.
- Sanitation management and inspections.
- Project Teleton 2021 Zero Carbon including GHG emissions inventory and compensation through forest planting.



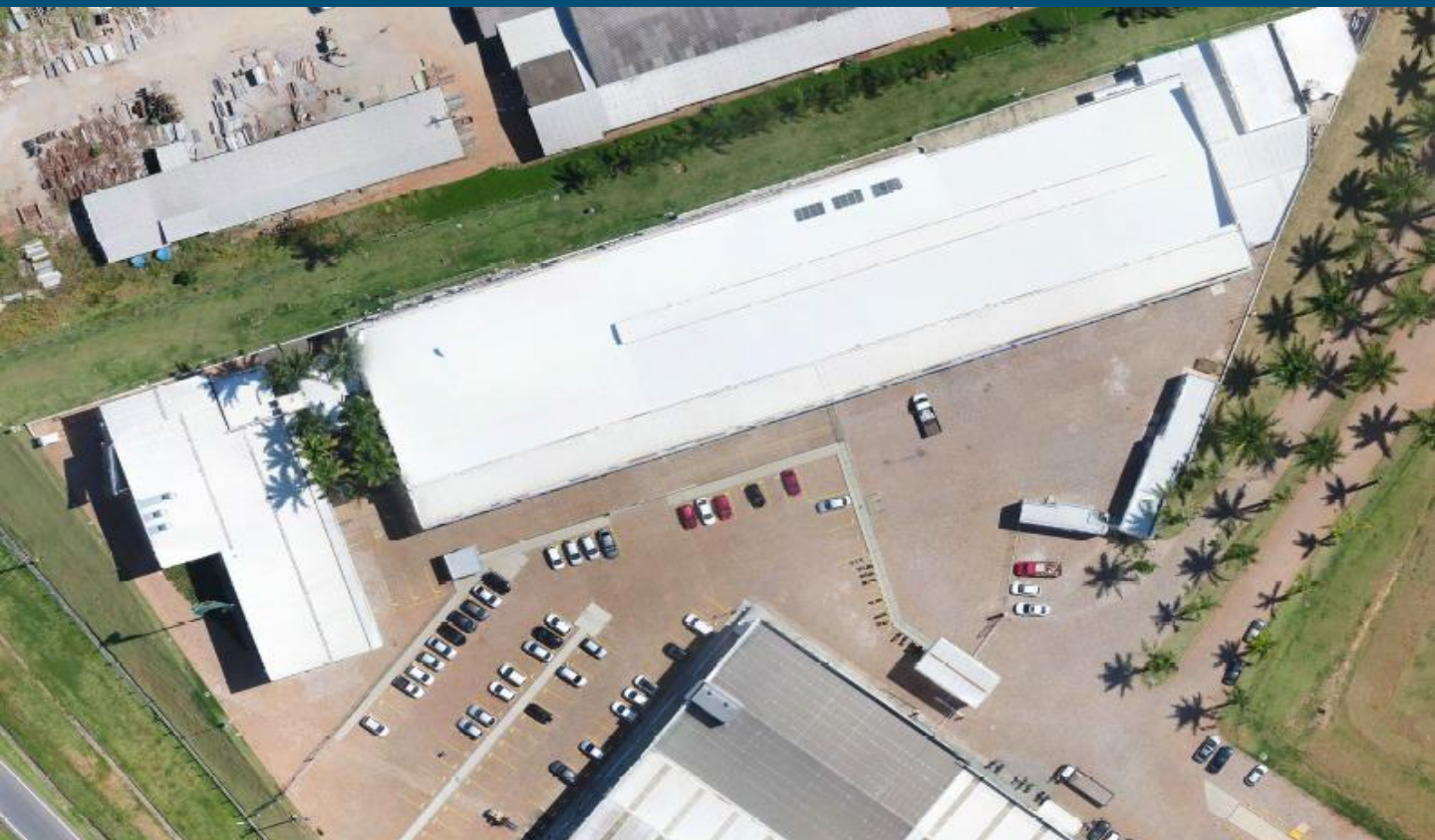
<https://www.sbt.com.br/>





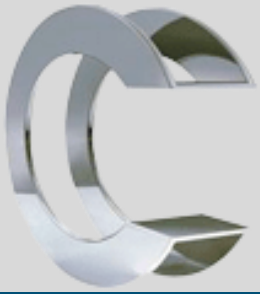
BOSCH

- Environmental licensing and consultation with environmental agency in specific projects and in different phases.
- Monitoring of SPT surveys and validation of drainage projects for sanitary sewage and industrial effluents.
- Support in obtaining the right to use water for collecting and releasing with environmental agency.
- Review of hydro sanitary and industrial effluent projects with as built.



<https://www.bosch.com.br/>





CURIMBABA GROUP

- Environmental licensing of several group companies in their different phases.
- Technical assistance for atmospheric emissions reduction in a mineral electrofusion plant including monitoring of technology implementation, validation and analytical evaluation.
- Carbon inventory in a specific industrial process.
- Atmospheric dispersion studies by fluid dynamics computation for contamination plume evaluation.
- Support in obtaining permits for the use of water to supply the particulate material abatement system.
- Environmental socio-economic studies to reduce impacts.
- Building layout and as built of industrial plants.



<https://www.grupocurimbaba.com.br>

INNVERNIA®

- Environmental licensing and consultation with environmental agencies for specific projects of the winery in different phases.
- Consulting in project and environmental management.
- Several projects: road, rainwater drainage, water use, generation and disposal of effluents, technical drawings, plani-altimetric survey.



<https://www.vivainnvernia.com/>

ZEG

- Monitoring of burning test for a new ultra-fast pyrolysis technology for solid waste degradation, including analysis of atmospheric emissions, effluents, as well as performance assessment and possibilities for environmental licensing.
- Consulting in technology development, logistics, allocation and demobilization of energy generator equipment.
- Interlocution with agencies to advise on different environmental processes and authorizations.



<https://zeg.com.br/>

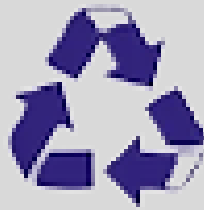
- Complete Environmental Report with assistance in obtaining all environmental licenses and expansion of the reception capacity to 1,000 ton of waste/day.
- All physical, social, biotic, economic, legal studies, diagnoses and monitoring for environmental follow-up of the landfill.



<https://ctrconchal.com.br/>

TRANSER

CENTRO DE GERENCIAMENTO DE RESÍDUOS



- Assessment of properties and new areas for the installation of waste treatment and disposal projects.
- Environmental studies in areas of direct and indirect influence.
- Monitoring of inspections in the project and technical assistance for interlocution with various state and federal environmental agencies.
- Guidance on technical aspects and complete projects for installation and licensing of new ventures.
- Georeferencing and aerophotogrammetric survey.



<https://www.transer.com.br/>



SOLID WASTE RECOVERY PLANT

- Environmental licensing in several phases and technical support in the development and implementation of mechanized sorting plants and equipment for the recovery of urban solid waste.
- Environmental studies and technical projects for the licensing of a civil construction waste receiving unit.
- Monitoring of fauna and vegetation including planting trees for ecological recovery.



<https://csoambiental.com.br/>



CORPUS
Saneamento e Obras Ltda

DUE DILIGENCE ENVIRONMENTAL LIABILITY

- Property valuation (according to DD 38/2017) to interpret signs of local contamination as a result of the operation and due to the potential for lint migration from Oxford Asphalt Plant, formerly the owner of the area.
- Environmental characterizations: geological, hydrogeological, climatological, pedological, geomorphological, among others.
- Evaluation of the old industrial process including water uses, rainwater drainage and analysis of the generation of effluents, solid residues, atmospheric emissions.



<https://corpus.com.br/>





PUBLIC SECTOR

- Guidance and definition of actions for environmental licensing and formation of public-private partnerships.
- Support in the dialogue with state and federal environmental agencies to solve technical aspects and projects.
- Definition of strategies with public authorities and public ministries to solve major environmental conflicts.
- Technical consultancy for environmental aspects in residential subdivisions and other types of projects.





OTHERS...

- Different sorts of plans, monitoring and diagnoses for studies of fauna and compliance with requirements with COMAER - Command of the Brazilian Air Force.
- Plans, monitoring and reporting for degraded areas recovery and compliance with terms of commitment to environmental recovery.
- Reports, analysis and requests of technical consultation at environmental agencies for more effective and assertive environmental licensing.
- Meetings and partnerships with third sector companies for guidance on technical, engineering and environmental aspects.
- Courses, lectures and actions for environmental education.
- Preliminary and in-depth evaluation and analysis for definition of environmental licensing procedures for small, medium and large enterprises / companies.
- Partnerships with outsourced companies and professionals to develop specific advanced environmental services.
- Prospecting for environmental technical monitoring of the decommissioning of onshore and offshore oil & gas platforms.

CONTACT US



(19) 3661-4030



geosustent@gmail.com



www.geosustent.com.br



Geosustent Engenharia



@geosustent



Rua Marques do Herval nº 506, Centro,
Espírito Santo do Pinhal – São Paulo, Brazil

